

How to Backup an image with Flash Wizard Pro

This guide has been written for educational purposes only.

World of Digital and I do NOT encourage or condone the illegal viewing of cable TV. The misuse of any of the information represented in this guide is done so at entirely your own risk.

Prerequisites...

1. Dream Box 500c
2. FlashWizard Pro (current version 6 RC1)
<http://www.world-of-digital.com/forums/showthread.php?t=57416>
3. Crossover Cable

Assumptions...

1. You have the IP of your Dream Box 500c set and your PC connected. If you HAVE not completed this step STOP and visit the World of Digital Forums (Dream Box section) and look for how to do this.

Step 1...

Locate the folder on your PC where you have FlashWizard Pro, the file arrives as a .zip and can be extracted to any folder as an example I suggest something like

C:\Documents and Settings**USER**\My Documents\FlashWizard

The **USER** will be whatever your current username is. Once you have unzipped the files you need to locate the .exe file.



NOTE: FlashWizard Pro does NOT install on your system, it is a self contained package and can be used from a USB Pen drive if required.

Once you start the FlashWizardPRO.exe you need to wait a few seconds for the program to setup you'll then be presented with the main screen as shown below.

Take a moment to read the 'blurb' on this screen as it provides a good explanation of the FlashWizard PRO tools and what you can do with the program.



The first step you need to complete (1st time only) is to set the IP address for FlashWizard PRO to connect to your Dream Box.

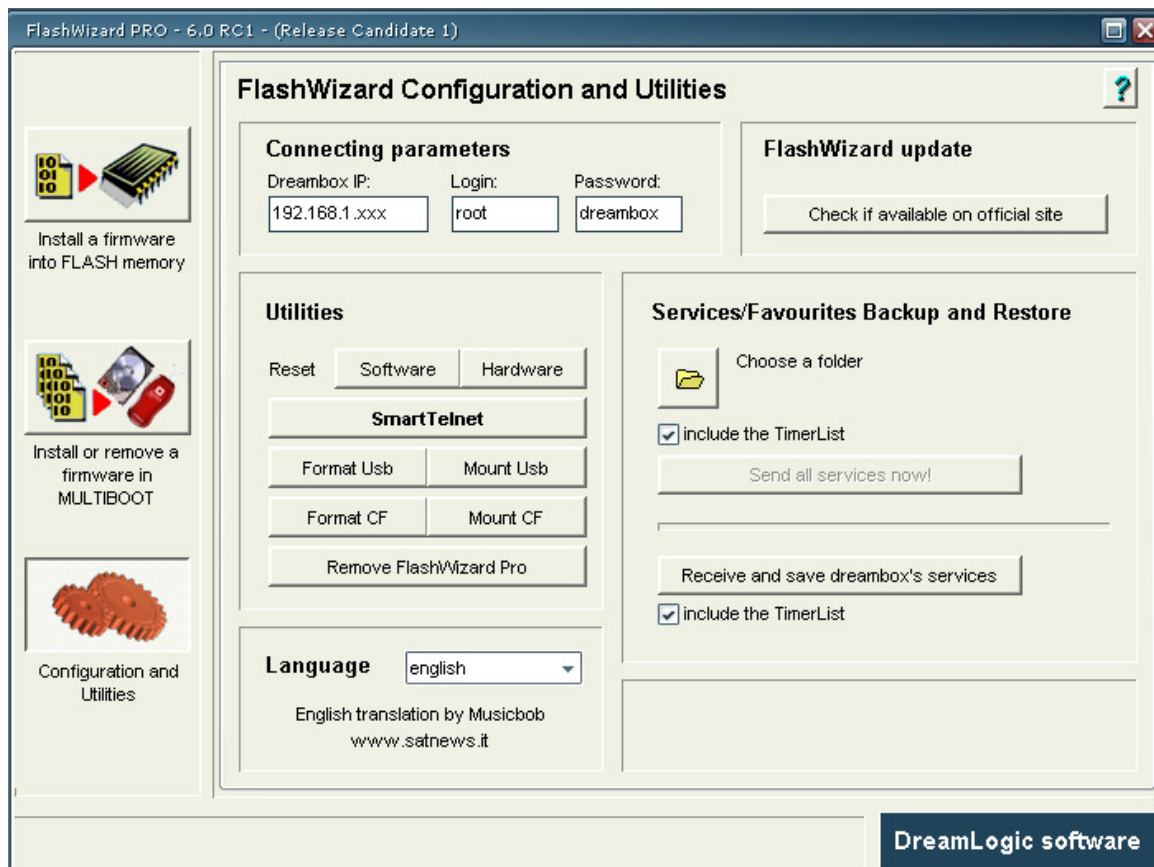
You only need to do this once as the program will save a configuration file **flashwizard.ini** with this information for future use.

Setting the IP for FlashWizard PRO ...

Locate the 'Configuration & Utilities' tab as shown below and select it

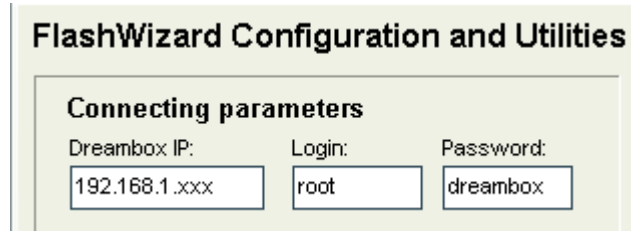


This will present you with the main configuration options screen which contains a number of options i.e. Connection Parameters



We are going to set the IP and user/pass combination to allow the software to use Telnet to 'talk' to our Dream Box.

At this stage you should have your Crossover cable connected to the Dream Box and your PC (or Router) the power to the Dream Box will be on too. Now we need to set our parameters so locate the following.



The image shows a screenshot of a software window titled "FlashWizard Configuration and Utilities". Inside the window, there is a section titled "Connecting parameters". This section contains three input fields: "Dreambox IP:" with the value "192.168.1.xxx", "Login:" with the value "root", and "Password:" with the value "dreambox".

The Dream Box IP is set here as **192.168.1.xxx** as this is a very common setting however you may have something different. Simply over type the details as required.

It's worth noting the Login and Password combination are the 'defaults' as most people don't change these.

Step 2...

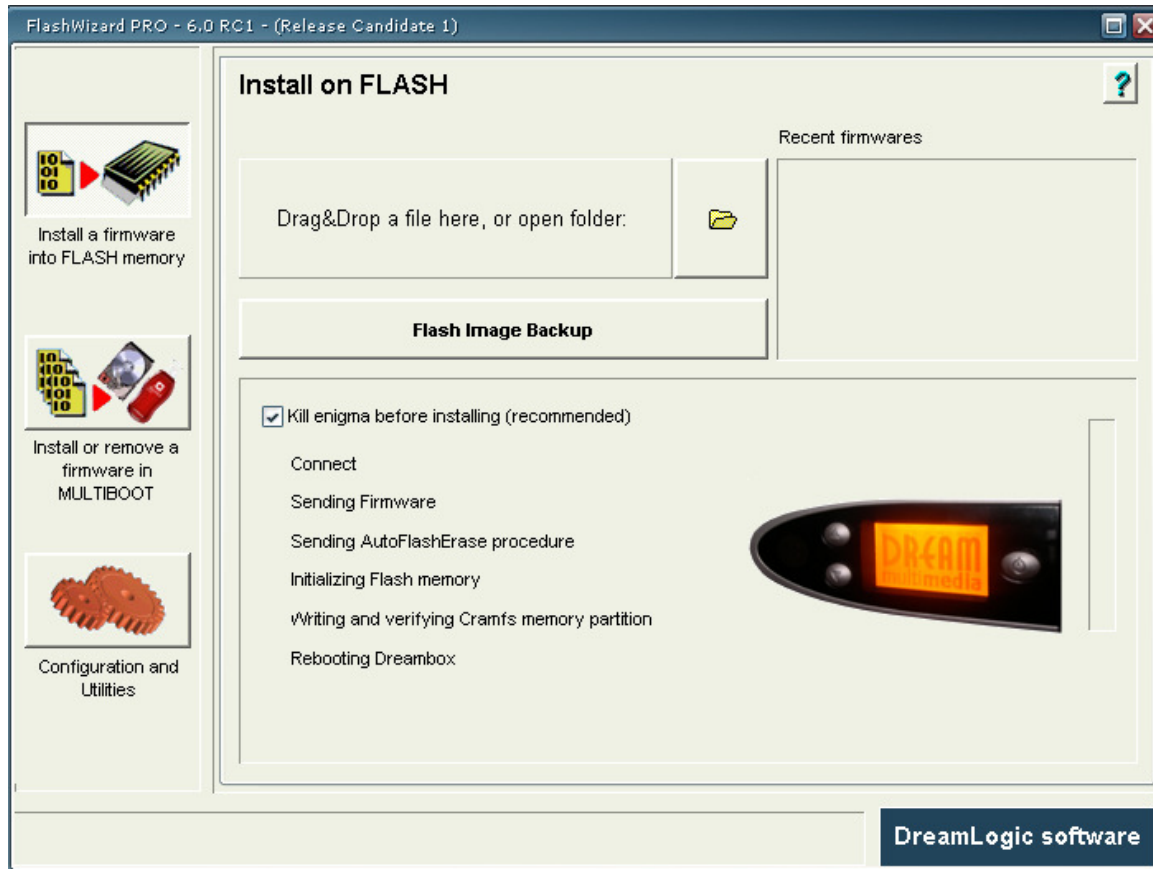
Ok we are now going to Backup a new image from the box, a Dream Box backup will be in the format of **BackupName.fwz**

Locate the 'Install a firmware into FLASH memory' dialogue



This will present you with the main Flash screen which is where you can prepare the image you wish to backup from the box.

In effect you are doing the reverse of 'flashing' the box.



This screen also offers an option to 'Flash Image Backup'

Flash Image Backup

Select this and you are asked to select a name and location to save your backup, on your PC or USB drive. It is advisable to give your backup an informative name for future reference.

I strongly suggest a format like: **image_id__backup_date.fwz**

NOTE: A backup will contain ALL current settings & files associated with the image on your Dream Box. It is a great way to 'manage' your images because once you have things setup like Bouquets and Services this simple process allows you to quickly restore your box to a 'ready' state. A GREAT timesaver...

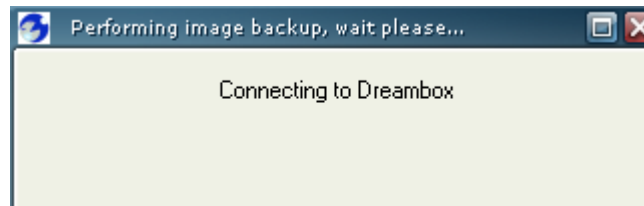
NOTE: if you have a software firewall at this for example Zone Alarm you may be prompted to allow 'FlashWizardPro.exe' to use the 'Telnet' protocol to connect to the IP of the Dream Box.

You should give permission for this as required by your software.

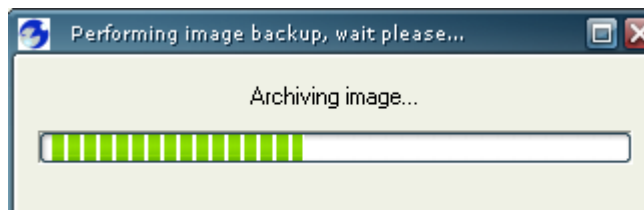
The transfer of the backup takes a few minutes but is indicated by a series of dialogues informing you of the process, very similar to installing any software under Windows.

Steps...

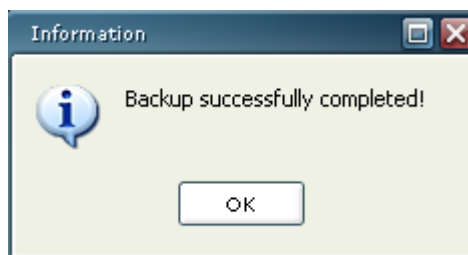
Connecting to the Dream Box



Archiving the Image



Backup Complete

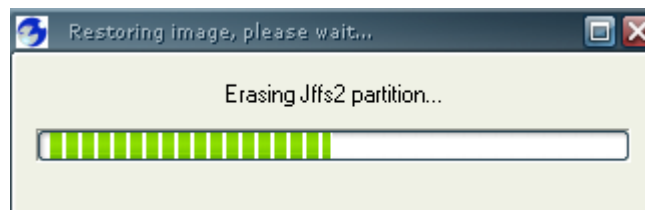


The point of creating a backup should by now be obvious, if you need to restore the backup you basically follow the same steps as you would to 'Flash an Image using FlashWizard PRO' you can obtain the guide for this step at the World of Digital Dream Box forum.

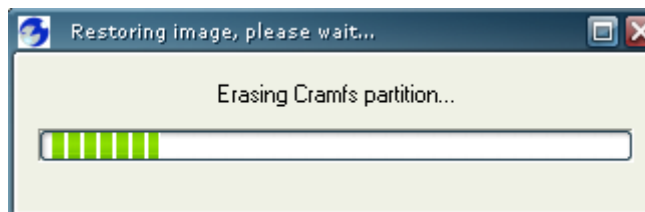
The steps to restore a backup image are the same but you'll be presented with a few new dialogues as shown below.

Steps...

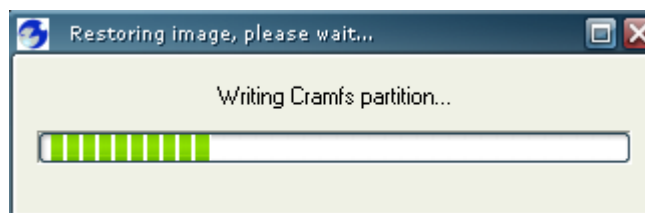
Erase Jffs2 partition



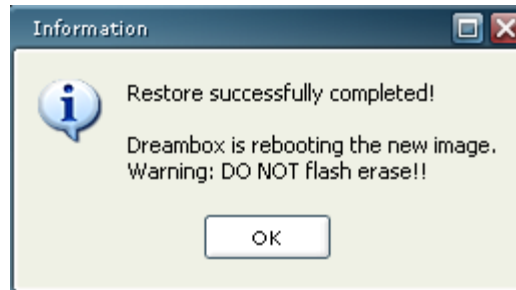
Erasing Cramfs partition



Writing the Cramfs partition



Once the final steps are completed you should see a screen like below, confirming everything is OK, the box will reboot and this will mean the LED turns red on the Dream Box which is normal.



At this point you are advised to wait approx 20 seconds and then remove the power from your Dream Box, after waiting around another 20 seconds restore power and the Dream Box should boot with the new image,

Sometimes you will get a delay i.e. a black screen on your TV this is perfectly normal.

If you still get no display after 2 minutes then it's advisable to reboot the box again to see if that helps.